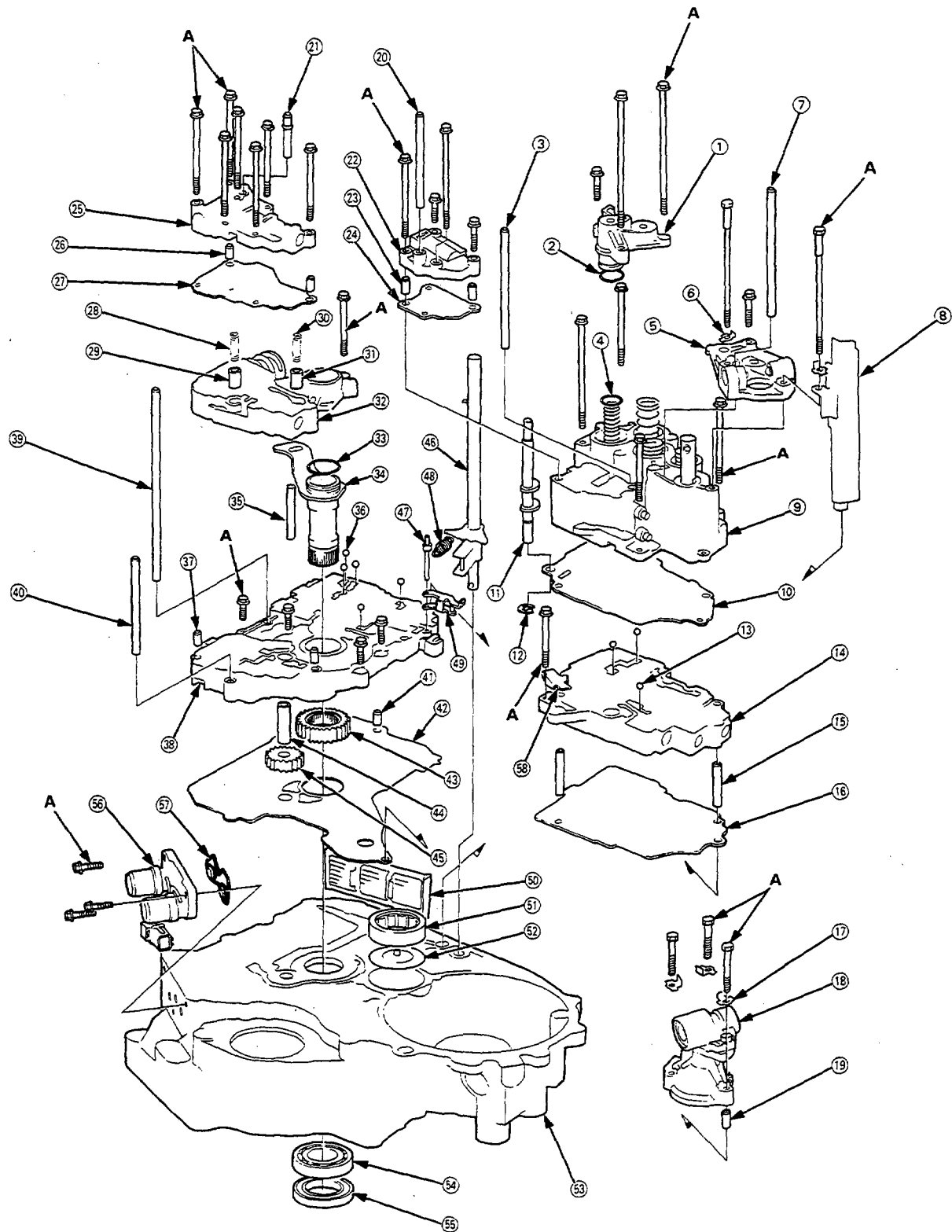


Illustrated Index

Torque Converter Housing/Valve Body





- | | |
|--|--|
| (1) ACCUMULATOR COVER | (32) REGULATOR VALVE BODY |
| (2) O-RING Replace. | (33) O-RING Replace. |
| (3) OIL FEED PIPE | (34) STATOR SHAFT |
| (4) O-RING Replace. | (35) STOPPER SHAFT |
| (5) LOCK WASHERS Replace. | (36) CHECK BALLS |
| (6) DETENT BASE | (37) DOWEL PINS |
| (7) OIL FEED PIPE | (38) MAIN VALVE BODY |
| (8) BAFFLE PLATE | (39) OIL FEED PIPE |
| (9) SERVO BODY | (40) OIL FEED PIPE |
| (10) SERVO SEPARATOR PLATE | (41) DOWEL PIN |
| (11) THROTTLE CONTROL SHAFT | (42) MAIN SEPARATOR PLATE |
| (12) E-RING | (43) OIL PUMP DRIVE GEAR |
| (13) CHECK BALLS | (44) OIL PUMP DRIVEN GEAR SHAFT |
| (14) SECONDARY VALVE BODY | (45) OIL PUMP DRIVEN GEAR |
| (15) DOWEL PINS | (46) CONTROL SHAFT |
| (16) SECONDARY SEPARATOR PLATE | (47) DETENT ARM SHAFT |
| (17) LOCK WASHERS Replace. | (48) DETENT SPRING |
| (18) GOVERNOR BODY | (49) DETENT ARM |
| (19) DOWEL PIN | (50) ATF STRAINER |
| (20) OIL FEED PIPE | (51) TORQUE CONVERTER HOUSING COUNTERSHAFT |
| (21) OIL FEED PIPE | NEEDLE BEARING |
| (22) MODULATOR VALVE BODY | (52) OIL GUIDE PLATE |
| (23) DOWEL PINS | (53) TORQUE CONVERTER HOUSING |
| (24) MODULATOR SEPARATOR PLATE | (54) TORQUE CONVERTER HOUSING MAINSHAFT BALL |
| (25) LOCK-UP VALVE BODY | BEARING |
| (26) DOWEL PINS | (55) OIL SEAL Replace. |
| (27) LOCK-UP SEPARATOR PLATE | (56) LOCK-UP CONTROL SOLENOID VALVE ASSEMBLY |
| (28) COOLER CHECK VALVE SPRING | (57) LOCK-UP CONTROL SOLENOID FILTER/GASKET |
| (29) COOLER CHECK VALVE | Replace. |
| (30) TORQUE CONVERTER CHECK VALVE SPRING | (58) STOPPER SHAFT STAY |
| (31) TORQUE CONVERTER CHECK VALVE | |

TORQUE SPECIFICATIONS

Ref. No.	Torque Value	Bolt Size	Remarks
A	12 N·m (1.2 kgf·m, 8.7 lbf·ft)	6 x 1.0 mm	